



Indiana University South Bend  
2020-2021 Annual Report

Cover Photo: *Memory: Though They are Gone, Their Impressions Remain* by Tuck Langland.

## Table of Contents

<b>Welcome</b> .....	<b>3</b>
<b>Fast Facts</b> .....	<b>4</b>
<b>Access and Student Success</b> .....	<b>9</b>
IU South Bend Enrollment Increases in Graduate Students and Diversity.....	9
IU South Bend Ranked by U.S. News for Social Mobility.....	9
Supporting Indiana’s 21st Century Scholars.....	9
Enhancing Digital Skills Pipeline in the Region.....	10
<b>Community Engagement</b> .....	<b>10</b>
IU South Bend Delivers Economic Impact.....	10
North Central Indiana Small Business Development Center Soars.....	11
Training Retired Medical Workers for the Pandemic.....	11
Celebrating the History of the South Bend Blue Sox.....	12
<b>Diversity, Equity and Inclusion</b> .....	<b>12</b>
IU South Bend Advances Equity and Inclusion on Campus, in the Community.....	12
IU South Bend is First IU Campus to Earn Military Friendly® Designation.....	13
Community Collaboration Addresses COVID Disparities.....	13
<b>Faculty Spotlights</b> .....	<b>13</b>
IU South Bend Associate Professor Dora Natella Creates Iconic IU Athletics Sculpture.....	13
IU South Bend Professor Elizabeth Bennion Receives Prestigious National Award.....	14
<b>IU South Bend Earns First Stars Sustainability Rating</b> .....	<b>15</b>
<b>Titans Men’s Basketball Team Meets Adversity Head On</b> .....	<b>15</b>
<b>Strong Support for Campus Mission in Bicentennial Campaign</b> .....	<b>16</b>
<b>IU South Bend’s COVID-19 Response</b> .....	<b>17</b>



## Welcome from Chancellor Elrod

Friends and Colleagues,

I am pleased to present our Annual Report for the 2020-2021 academic year. The 2020-21 academic year was filled with COVID-testing, vaccination campaigns, masking and other precautions as we navigated the second year of the COVID-19 pandemic. While we know the pandemic presented challenges of all kinds to members of our community, we came together to overcome them. It was a year of resilience and tenacity. I am proud of everyone who stepped up and helped out - this year showed the true power of community. Together, we persevered and even thrived. This Annual Report highlights just some of our successes.



We continued to move forward on important programs, priorities, and initiatives, some of which you will read about in this Annual Report. An exciting example is the grant we received from the Community Foundation of St. Joseph County to join them and others in our community in better supporting 21<sup>st</sup> Century Scholars. We also gained new recognitions as a Military Friendly<sup>®</sup> School, as a university that promotes Social Mobility in U.S. News rankings, and as a Bronze certification for Sustainability as part of the STARS system. An IU-wide economic impact study was released, again affirming the important role IU South Bend plays as a driver of economic development. Finally, our Men's Basketball team achieved its second consecutive Chicagoland Collegiate Athletic Conference (CCAC) Tournament championship, despite a mid-season shut-down due to COVID. We also wrapped up our successful IU Bicentennial fundraising campaign, raising \$32 million for IU South Bend. So, we have much to be proud of and to celebrate!

I hope you enjoy reading about all of our accomplishments. Thank to everyone who played a role in our success, from our dedicated faculty and staff, amazing students, and alumni, to our friends and donors in the community. You are all part of the Titan family and together we are stronger.

With Hoosier Spirit and Titan Pride,

Susan Elrod, PhD  
Chancellor



## 2020-2021 Fast Facts

As the largest regional campus of Indiana University, IU South Bend's history is a mix of tradition and innovation. Indiana University began teaching classes in South Bend in 1916 at Central High School, located downtown. In 1961, IU South Bend moved to its current campus location along the St. Joseph River. In 1967, IU South Bend conferred its first degrees. Nearly 5,000 students attend IU South Bend, which now offers nearly 100 degree programs, 10 varsity sports playing in the Chicagoland Conference of the National Association of Intercollegiate Athletics (NAIA), and more than 250 full-time faculty members. Graduates earn an Indiana University degree which is respected throughout the state, across the country, and around the world.

### Enrollment

Total Enrollment	4,942
Undergraduate Students	4,375
Graduate Students	567
International Students	140
Incoming Transfer Students	291
Females	65%
Males	35%
Minority Students	28%
First Generation Students	37%
Traditional Age (24 and under)	72%
Nontraditional Age (25 and up)	28%
Full Time	70%
Part Time	30%

### Student Geographics

St. Joseph County	49%
Elkhart County	21%
Other Indiana Counties	20%
Michigan	3%
Other States	2%



## **Nearly 100 Degree Programs Offered Through Five Schools/Colleges**

College of Liberal Arts and Sciences  
Ernestine M. Raclin School of the Arts  
Judd Leighton School of Business and Economics  
School of Education  
Vera Z. Dwyer College of Health Sciences

## **Graduate Programs**

Accounting (M.S.)  
Applied Mathematics & Computer Science (M.S.)  
Business Administration (MBA)  
    w/concentrations in Finance, Human Resources Management, Marketing  
Communications Studies (M.A.)  
Elementary Education (M.S.)  
Secondary Education (M.S.)  
Special Education (M.S.)  
Educational Leadership (M.S.)  
Education (M.S.)  
    Clinical Mental Health Counseling  
    School Counseling  
    Addiction Counseling  
    Marriage, Couple, and Family Counseling  
English (M.A.)  
Liberal Studies (M.L.S.)  
Music (M.M.)  
Nursing (M.S.)  
Public Affairs (M.P.A.):  
    Health Systems Management  
    Non-profit Management  
    Public Management  
Social Work (M.S.W.)

## **Alumni**

36,000 alumni in all 50 states and 55 foreign countries  
65% of graduates remain in the area

## **Student Life**

More than 100 clubs and organizations  
Student Housing for 400



## **National Association of Intercollegiate Athletics (Chicagoland Conference)**

Men's and women's basketball

Women's volleyball

Men's baseball

Women's softball

Men's and women's cross country

Men's and women's golf

Women's soccer

## **Accredited Programs**

Judd Leighton School of Business and Economics

Association to Advance Collegiate Schools of Business (AACSB)

Chemistry (B.S.)

American Chemical Society

Counseling and Human Services (M.S.)

Council for Accreditation of Counseling and Related Educational Programs (CACREP)

Dental Hygiene (B.S.)

Commission on Dental Accreditation of the American Dental Association (CODA)

Education, School of

Council for the Accreditation of Educator Preparation (CAEP)

Music (B.M.)

National Association of Schools of Music (NASM)

Nursing (B.S.N.)

Commission on Collegiate Nursing Education (CCNE)

Nursing (M.S.N.)

Commission on Collegiate Nursing Education (CCNE)

Public Affairs (M.P.A.)

National Association of Schools of Public Affairs and Administration (NASPAA)

Radiography (A.S.)

Joint Review Committee on Education in Radiologic Technology (JRCERT)

Social Work (M.S.W.)

Council on Social Work Education (CSWE)



## Employment

Employees	1,166
Full-time faculty	263
Part-time faculty	197
Full-time staff	251
Part-time staff	74
Student Workers	381

## Tuition (Undergraduate)

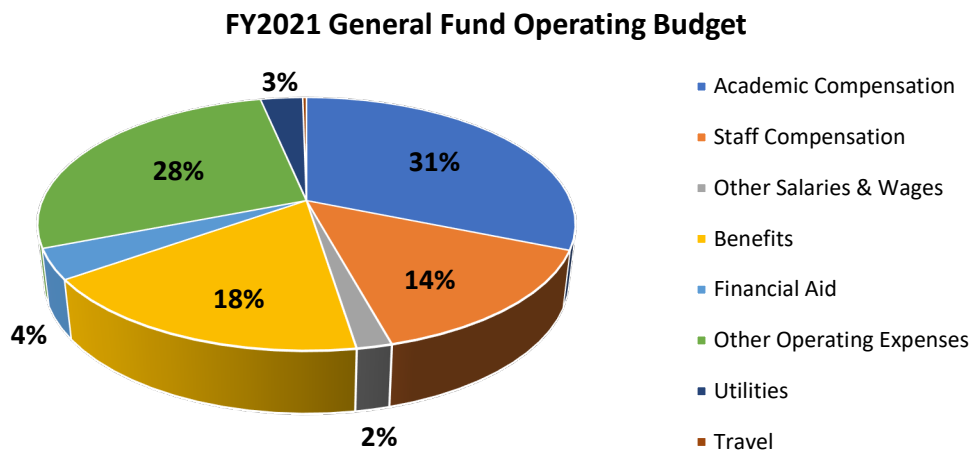
In-State:	\$3,533.68/semester
Out-of-state:	\$9,963.19/semester
Tuition and Fees:	\$7,715.18 for full-time, in-state student

## Annual Research/External Funding Contracts and Grants

External Funding Awarded	\$1,704,397
--------------------------	-------------

## FY2021 General Fund Operating Budget

Academic Compensation	\$19,773,758
Staff Compensation	\$9,219,996
Other Salaries & Wages	\$1,135,629
Benefits	\$11,196,876
Financial Aid	\$2,446,703
Other Operating Expenses	\$17,537,186
Utilities	\$1,919,066
Travel	\$173,680
Transfers	(\$784,486)
Total GF Operating Budget	\$62,618,408



## Academic Centers and Areas of Excellence

**Community Engagement** — advises, monitors, and supports community engagement on campus.

**Center for a Sustainable Future** — engages the campus and community to find innovative ways to meet the needs of the present without compromising the ability of future generations to meet their own needs. It focuses on the discovery and dissemination of practices and strategies that are ecologically friendly, economically sound, and socially responsible. Its goal is to help Michiana become one of most vibrant and leading regions in the newly emerging green economy.

**Civil Rights Heritage Center** — a living museum that is a repository of local history and culture and it relates to underrepresented communities and their struggles for civil rights and social justice.

**American Democracy Project** — hosts voter registration drives and candidate debates from school board to U.S. Congress.

**Bureau of Business and Economic Research** — provides business and economic expertise to municipal, business, and non-profit organizations, and maintains a database of local economic indicators.

**Professional Development and Life-Long Learning** — offers continuing education courses and customized training options.

## Regional and Business Development Centers

**Elkhart Center** — offers courses and programs in downtown Elkhart where students can receive personalized attention while earning an IU degree close to home.

**Indiana Small Business Development Center** — a state agency hosted on campus provides local businesses and non-profits with marketing and information management support.





## Access and Student Success

### **IU South Bend Enrollment Increases in Graduate Students and Diversity**

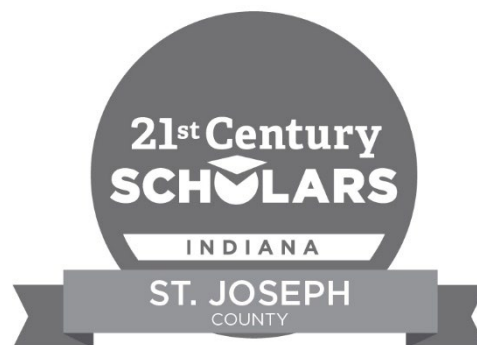
IU South Bend saw an increase in graduate students and diversity in its fall 2020 census count. Enrollment of African American students increased 16 percent over the prior year, while continuing African American graduate students rose by 21 percent. Overall, the total African American student enrollment was eight percent. Over 20 percent of new freshmen are Latinx, and overall the campus continues its upward trend in Latinx enrollment, at 14.5 percent. The campus also saw increases in new and continuing Latinx graduate students, up 53 percent and 40 percent, respectively. The number of new graduate students enrolling at IU South Bend also rose nearly five percent, with the total number topping 500.

### **IU South Bend Ranked by U.S. News for Social Mobility**

The 2021 rankings of national and regional universities released by U.S. News and World Report show upward movement for Indiana University South Bend. IU South Bend is 50th for social mobility rankings among regional universities in the Midwest, recognizing good graduation rates among students who receive federal Pell Grants.

### **Supporting Indiana's 21st Century Scholars**

Indiana University South Bend is enhancing support for 21st Century Scholars thanks to a grant from the Community Foundation of St. Joseph County on their \$4 million Lilly Endowment Inc. award. The grant will support the 21st Century Scholar Success Initiative, an effort to dramatically increase the number of local low-income students who achieve well-paying jobs in our region by completing post-secondary degrees through Indiana's 21st Century Scholars program.



IU South Bend will work closely with the Community Foundation and other collaborating partners on a three-year project. The funding provides staffing for a second success coach to provide outreach and support services to all IU South Bend 21st Century Scholars. IU South Bend enrolls over 350 21st Century Scholars and knows there are more it can serve. The two success coaches will provide dedicated advising for IU South Bend 21st Century Scholars and implement new program components and coordinate other aspects of a comprehensive 21st Century Scholar program, including a summer jump start bridge program and first year seminars. Additionally, scholars will take part in IU's MoneySmarts U financial literacy program, special career assessment counseling and services, peer and alumni/community mentoring, and distinct cultural, social, and academic activities.

## Enhancing Digital Skills Pipeline in the Region

IU South Bend is enhancing and developing digital skills in computer science, health sciences, and data analytics for K-12 students and teachers, adult learners, and degree seekers in Elkhart and St. Joseph County thanks to a \$350,000 Phase II Digital Skills Accelerator grant from the Labs for Industry Futures and Transformation (LIFT) Network. The LIFT Network, in conjunction with the South Bend-Elkhart Regional Partnership, is a regional consortium of colleges and non-profits, to equip the region's industries and residents with technology and advanced manufacturing skills for the future. The grant will help IU South Bend create a digital pipeline to strengthen existing and new pathways and degree completion opportunities. Programs will include a K-12 Summer Academy, Continuing Education Unit (CEU) opportunities in health sciences for current and future workers, degree enrichment, applied and experiential experiences, workplace-based learning, and a new data analytics certificate.

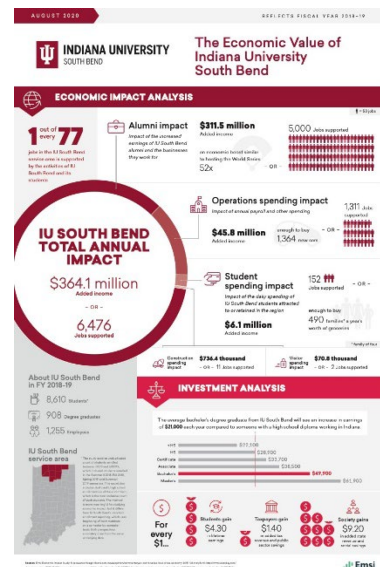
A portion of the LIFT funding will be used to create the Innovation Maker Lab, which will be equipped with the technology to support hands-on learning projects for a variety of learners. To prepare the regional workforce with highly sought sonography skills, where dozens of jobs go unfilled, the Vera Z. Dwyer College of Health Sciences will use LIFT grant funds to purchase sonography and telehealth equipment. To support advancement in health care professions, the Office of Continuing Education (OCE) will launch a Certified Nursing Assistant (CNA) program. With the LIFT grant, an Electronic Health Records component will be added to distinguish the certification from other programs. Leveraging the Torres Family Data Analytics Lab in the Judd Leighton School of Business and Economics, the school will add a Data Analytics Certificate.

## Community Engagement

### IU South Bend Delivers Economic Impact

An economic impact study this year revealed that IU South Bend created \$364.1 million for the regional economy in FY 2018-19. The study was commissioned by Indiana University and conducted by Emsi, a leading provider of economic impact studies and labor market data to educational institutions.

One out of every 77 jobs in the IU South Bend service area is supported by the activities of IU South Bend and its students. Furthermore, the average bachelor's degree graduate from IU South Bend saw an increase in annual earnings of \$21,000 over their working lives compared to someone with a high school diploma working in Indiana. For every \$1 students invest in their education at IU South Bend, they will receive \$4.30 in higher lifetime earnings. The results of the study illustrate the positive impact that IU South Bend has on our students and our communities.



### North Central Indiana Small Business Development Center Soars

IU South Bend is proud to serve as host to the North Central Indiana Small Business Development Center. The Center's remarkable progress providing expert guidance and resources to entrepreneurs in the region aligns directly with IU South Bend's mission to help drive local economic development.

In 2015, the Center recorded 155 clients, 12 new business starts, and \$1.4 million capital infusion. Remarkably, in 2020 the number of clients served has grown to 441, with 31 new business starts and resulting in a \$15.3 million capital infusion. In fact, in 2020 the Center exceeded every goal assigned by the Small Business Administration and the state Small Business Development Center network, while serving the region through a high level of community engagement. It's also noteworthy that 51% of their clients are women and 33% are underrepresented populations.

The Center enjoys many positive connections with IU South Bend. Director Alan Steele, an IU South Bend alumnus, noted that the Center has served approximately 35-40 IU South Bend students and many alumni. Several IU South Bend faculty have been expert presenters on webinars the Center hosted for small business owners. In addition, three of the Center's four employees are IU South Bend alumni.



### Training Retired Medical Workers for the Pandemic

In January, The School of Nursing at IU South Bend's Vera Z. Dwyer College of Health Sciences provided training for retired physicians, pharmacists and nurses who volunteered to help administer COVID-19 vaccinations. In the training, the retired medical providers reviewed the mechanical skills of drawing up the medicine from a vial into a syringe, finding the injection landmark on the arm and actually giving the injection. In addition, the group was taught about the COVID-19 vaccines and how to respond to reactions.



## Celebrating the History of the South Bend Blue Sox

From 1946 to 1954, athletes took the field at the Playland Park (now Indiana University South Bend’s River Crossing Student Housing) to compete as the South Bend Blue Sox, one of the four original teams of the All-American Girls Professional Baseball League (AAGPBL).

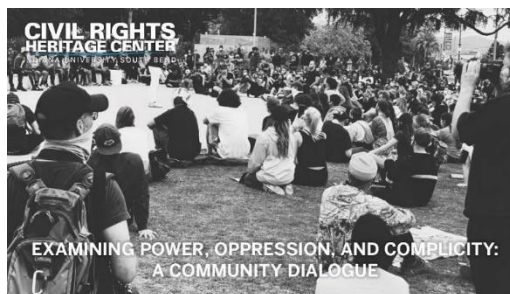


On May 26, the 75th anniversary of the first time the Blue Sox played at Playland Park, Betsy Jochum, a member of the original South Bend Blue Sox, Chancellor Susan Elrod, South Bend Mayor James Mueller, and other leaders dedicated a historical marker celebrating these women. The marker, a collaboration between The History Museum and IU South Bend, was installed near the site of Playland Park where the Blue Sox played after their first three years of competition at Bendix Field.

## Diversity, Equity and Inclusion

### IU South Bend Advances Equity and Inclusion on Campus, in the Community

IU South Bend’s Alumni Association and Civil Rights Heritage Center hosted a community conversation entitled “Examining Power, Oppression, and Complicity: A Community Dialogue.” This community conversation—one of the nearly one hundred IU South Bend programs and initiatives focused on Title IX and/or diversity, equity and inclusion (DEI) during academic year 2020-2021—invited people to consider racial injustice and our personal, interpersonal, institutional, and cultural responsibility to stand against it. Despite the pandemic limiting traditional formats and educational offerings, these programs and initiatives impacted more than 3,700 individuals. The programming included engaging the community at the Civil Rights Heritage Center, through speak-outs for students who want to share their voices, and with our faculty’s and staff’s expertise in critical issues.



The Indiana University South Bend Vera Z. Dwyer College of Health Sciences Inclusive Action Advisory Council, in partnership with the IU South Bend Civil Rights Heritage Center, invited members of the Board of Health and the local health provider community for an online event, “Racism is a Health Crisis.” “Racism is a Health Crisis” served as a conversation among Board of Health members; IU South Bend Vera Z. Dwyer College of Health Sciences faculty, students, and staff; and health care professionals in the St. Joseph County region about what this declaration means and how it might impact the lives of people in our community. “Seeing Systems,” hosted by the Center for a Sustainable Future, invited speakers each month to make and share connections between social justice, sustainability, community building, peace building efforts, and more.



## **IU South Bend is First IU Campus to Earn Military Friendly® Designation**

IU South Bend received the 2021-22 Military Friendly® designation; it is the first Indiana University campus to receive this recognition. The bronze-level designation was awarded for the



campus's self-guided assessment of a number of important factors to veterans, including academic policies, admissions, financial assistance, and culture. The Military Friendly® ratings program was started in 2003 as an advocacy vehicle to encourage civilian organizations to invest in programs to recruit, retain and advance veterans as employees, entrepreneurs and students. More than 1,200 schools participated in the survey and 767 earned the designation.

## **Community Collaboration Addresses COVID Disparities**

The COVID-19 pandemic has disproportionately impacted communities of color, and data shows that fewer Black and LatinX people are getting vaccinated against COVID. To address this, Michael Harley, a member of 100 Black Men of Greater South Bend and director of student teaching and clinical practice at IU South Bend's School of Education, took the initiative to connect The 100 to his colleagues at the Vera Z. Dwyer College of Health Sciences. The 100 were interested in creating a COVID public service announcement specific for the needs of the



Black community and looked to Dwyer College's Inclusive Action Advisory Council for health expertise to develop the script and involve IU South Bend alumni in the PSA.

## **Faculty Spotlights**

### **IU South Bend Associate Professor Dora Natella Creates Iconic IU Athletics Sculpture**

On June 7th Indiana University commemorated the unveiling of a magnificent new sculpture on the Bloomington campus created by Dora Natella, associate professor of fine arts at IU South Bend. The 4,830-pound bronze sculpture called the Spirit of Indiana was installed in Miller Plaza on the south end of Memorial Stadium. Sitting atop a circular base that measures 11 feet in



diameter and weighs 700 pounds, the new donor-funded art piece features five young student-athletes coming together in a huddle before taking the field of competition.

The sculpture's name reflects Indiana University's 1925 slogan, "The Spirit of Indiana," which is about team over self. The huddle depicts the diverse athletes of Indiana University. "The circular configuration of the athletes in the huddle is like the spokes of a wheel," said Natella. "They create a burst of energy. This piece is about the energy and empowerment that comes from teamwork."



### **IU South Bend Professor Elizabeth Bennion Receives Prestigious National Award**

IU South Bend Professor of Political Science Elizabeth Bennion was the 2020 recipient of the Walter Beach Pi Sigma Alpha Award, an award given annually by the National Capital Area Political Science Association (NCAPSA) to a political scientist who has made "a substantial contribution to strengthen the relationship between political science and public service."

Professor Bennion and Professor Dr. Richard Davis of Brigham Young University were co-recipients of this year's award due to their joint work establishing a new Civic Engagement Section of the American Political Science Association. Bennion and Davis also recently founded the State Debate Coalition, an organization that brings together representatives of the Indiana Debate Coalition (of which Bennion is president), the Utah Debate Commission (of which Davis is a founding member), and other state debate commissions and works to expand the commission model across the nation.

Locally, Bennion's public engagement includes her work as Director of the American Democracy Project of IU South Bend and Director of Voter Services for the League of Women Voters of the South Bend Area. In these capacities she leads voter registration, education, and mobilization efforts on campus and in the community. Every election season, Bennion organizes and moderates a wide range of candidate forums and debates at the local, state, and national levels.

NCAPSA is the professional organization in the Greater Washington DC area dedicated to bringing together in common professional and scientific interest those scholars, writers, public service employees, and others to encourage the scientific study of political and governmental phenomena and institutions.



## IU South Bend Earns First STARS Sustainability Rating

After two years of data gathering and intense work, IU South Bend has received a bronze certification for the Sustainability Tracking, Assessment & Rating System (STARS) from the Association for the Advancement of Sustainability in Higher Education (AASHE). IU South Bend is the first IU regional campus to achieve a certification from AASHE. AASHE was established in 2005 and is the leading association for the advancement of sustainability in higher education. It serves a full range of higher education faculty, administrators, staff and students who are change agents and drivers of sustainability innovation. The self-survey examined academics, engagement, operations, planning and administration, and innovation and leadership. Academics and research scored the highest marks, thanks to the Sustainability Studies program.



## Titans Men's Basketball Team Meets Adversity Head On

Coming off its first Chicagoland Collegiate Athletic Conference (CCAC) Tournament championship in program history and shattering almost every record in the books last season, the Titans saw its campaign come to an unexpected finish when the national tournament was canceled last March due to the pandemic. Returning most of their squad, the Titans were poised for the 2020-21 season and started the year at 2-0 overall before COVID-19 concerns forced all regional campuses to shut down athletics.



The decision kept Coach Cooper's team on the sidelines from late November to early February before they received the go-ahead to start practicing again. It is no secret that playing only two games and taking 85 days off would be difficult, but that is not the only challenge that the Titans faced. Receiving the last spot in the tournament, the 15-seeded Titans played all four post-season games on the road in just seven days to claim its second straight CCAC title.

During the seven-day stretch, the road warriors travelled a combined 872 miles and punched their ticket to the national tournament in dramatic fashion. The Titans rallied from a four-point deficit in the final 24 seconds to beat top-seed and regular-season champions Olivet Nazarene

University, 76-75, off a three-pointer by senior Sergio Diaz. The Titans continued its unforgettable season, becoming the only one of three CCAC teams to advance to the second round of the 2020-21 NAIA Men's Basketball National Championship Opening Round.

IU South Bend weathered the RedStorm of Rio Grande (Ohio) by a score of 82-71 for the program's first victory in the national tournament on March 13 before its unforgettable season came to an end on March 14. The Titans fell 76-59 to the No. 1 overall seed and host school Indiana Wesleyan University, snapping its 15-game winning streak that dated back to Feb. 5, 2020. IU South Bend finished its season 7-1 overall, which is the fewest wins in a single season but also the highest win percentage in school history, all while persevering to overcome the adversities in their path.

## Strong Support for Campus Mission in Bicentennial Campaign

The Indiana University Bicentennial Campaign raised nearly \$3.9 billion with IU South Bend's contribution of almost \$32 million over eight years, showing strong donor support for IU South Bend's mission.

The Vera Z. Dwyer College of Health Sciences and the Judd Leighton School of Business and Economics were both named during the Bicentennial Campaign with gifts totaling over \$12 million. The naming gifts to the college and the school provide enhanced resources for students and faculty, including significant scholarship support for students. The Vera Z. Dwyer College of Health Sciences gift also created and endowed the Bicentennial Distinguished Chair of Palliative Care, held by Dr. Bunmi Okanlami, and the Distinguished Chair of Nursing. In addition, it also provided funds to create the Palliative and Supportive Care Minor.

Likewise, a generous naming gift from the Judd Leighton Foundation to the Judd Leighton School of Business and Economics significantly enhanced scholarship support for undergraduate students and fellowships for graduate students. In addition to student support, the gift provides funds for faculty teaching and research activities.

The gift also provided funds to add two staff positions: a retention specialist to develop and coordinate freshman year programming to improve student persistence and graduation rates, as well as an experiential learning coordinator to assist students with career development, internships, co-ops, field projects, and service learning opportunities.





Other named gifts during this campaign enhanced campus facilities and student learning and instructional spaces, including:

- Hammes Bookstore
- Louise E. Addicott and Yatish J. Joshi Performance Hall
- Schurz Creative Lab
- Torres Family Data Analytics Lab
- Pfeil Field, home to IU South Bend's women's softball team
- Elkhart Center in partnership with the Community Foundation of Elkhart

A variety of other philanthropic gifts have improved instructional space, provided funds for student groups and athletics, and aided faculty development efforts. In a tremendous show of support for IU South Bend's mission, current and former faculty and staff contributed almost \$1.8 million to ensure student success. Through the campaign, donors created 85 new scholarships for students at IU South Bend, providing almost \$2 million more in scholarship resources for students.

## IU South Bend's COVID-19 Response

Like others around the country and world, IU South Bend's community has felt the impact of COVID-19. At IU South Bend, seven Restart Working Groups made up of more than 80 faculty, staff, and students worked to develop recommendations and guide the campus to a safe opening.

Arrangements were made for classrooms and offices to de-densify and meet physical distancing requirements, and everyone was required to wear masks on campus. Staff, faculty, and students signed an agreement to commit to individual health and safety practices before returning to campus. The nearly 300 students living in campus housing were required to complete a pre-arrival COVID-19 test within 10 days of moving in and on arrival testing the day they moved in.

On-campus safety was at the forefront with disposable masks, hand sanitizer stations, deep cleaning, signs, and plexiglass dividers. A public dashboard provided information to the community about testing results at all IU campuses. This collaborative approach assured the campus of strong engagement and cooperation in creating the safest possible learning and working environments while also providing the support everyone needed to stay healthy and thrive.





**INDIANA UNIVERSITY  
SOUTH BEND**

1700 Mishawaka Ave.  
South Bend, IN 46615  
Phone: (574) 520-4872